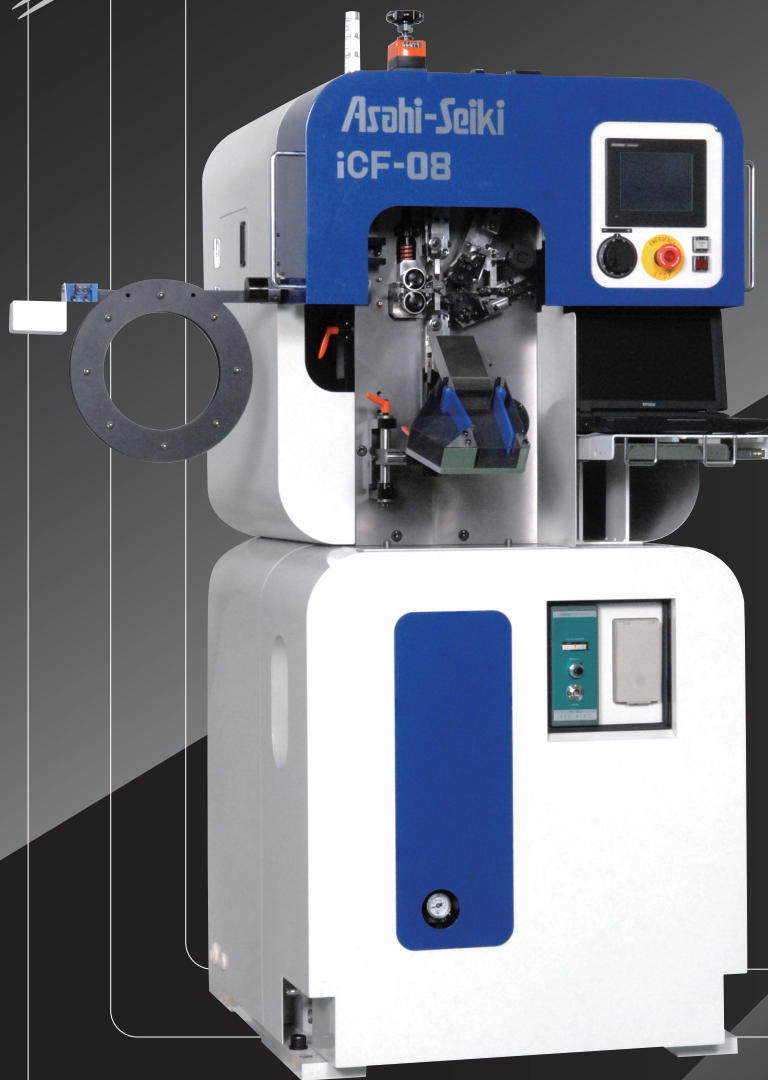


Integral Coil Former

# iCF-08&iCF-26

**NEW  
DESIGN**



iCF-08



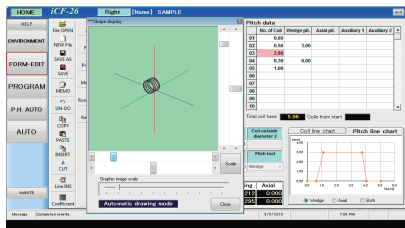
iCF-26

**NEWLY DESIGNED FOR  
COST-SAVING PERFORMANCE**

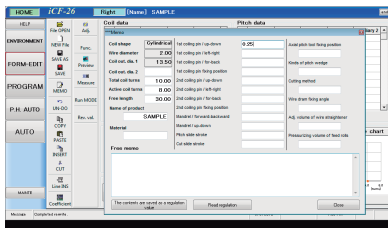
**NEW SYSTEM APPLICATION  
WITH PRODUCTION CONTROL**

- NEWLY DESIGNED LENGTH GAUGE WITH SORTER
- EASY TO READ MEMORY DATA

## USER FRIENDLY AUTOMATIC PROGRAMMING



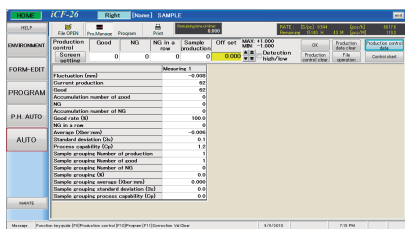
DATA ENTRY SCREEN



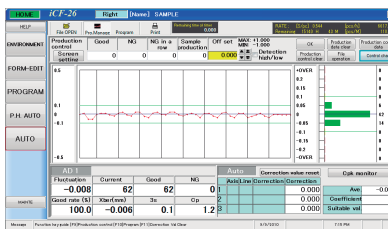
SETUP MEMO SCREEN

- SIMPLE INPUT OF SPRING DATA AND CREATE A BASIC PROGRAM, AUTOMATICALLY WITH 3D SPRING DISPLAY .
- THE PROGRAM COMPLETED WITH FINE ADJUSTMENT.
- QUICK SETUP CHANGE WITH THE TOOL MEMORY FUNCTION.

## PRODUCTION CONTROL



PRODUCTION CONTROL DATA DISPLAY



STATISTICAL GRAPHIC & HISTOGRAM DISPLAY

- A GOOD PART RATIO BY THE USE OF SET LENGTH OF THE FIRST PIECE, MEASURED BY THE NUMBER OF PIECES .
- AUTOMATIC SETUP OF GOOD PART PARAMETER AND TOLERANCE.
- ANY SCREEN (DATA) CAN BE EASILY PRINTED.

## SPECIFICATIONS

	ICF-08	ICF-26
Wire diameter (mm)	φ0.1~0.8	φ0.6~2.6
Spring index (D/d)	3 or more	3 or more
Display	Liquid crystal color monitor	
External dimensions (mm)	Height	1670
	Width	1150
	Depth	900
Weight (approx./kg)		800
		1500
Motor capacity (kW)	Wire feed	0.75
	Cut/Pitch	0.75
	Pitch/Cut	0.75
	Axial pitch	0.75
Coiling slide	0.75	2

## STANDARD ACCESSORIES

1. WIRE FEEDING DEVICE
2. PITCH / CUT SLIDE (2 SLIDES - UPPER / LOWER)
3. AXIAL PITCH DEVICE
4. COILING UNIT FOR RIGHT HANDED COIL
5. WIRE DRUM
6. LAPTOP COMPUTER (10.1 in.)
7. PRODUCTS SORTING AND EJECTING DEVICE
8. FREE LENGTH MEASURING SENSOR
9. SENSOR FOR OUT OF WIRE

## OPTION

1. TOOL
2. ROTARY CUT (only available for iCF-26)
3. MANDREL RETRACTING UNIT
4. COILING UNIT FOR LEFT HANDED COIL
5. ADDITIONAL STANDARD TOOL HOLDER
6. MACHINE LAMP
7. TRANSFORMER

## TOOL CHART

	iCF-08								iCF-26									
	0.1	0.2	0.3	0.4	0.5	0.6	0.7	0.8	0.6	0.8	1.0	1.2	1.4	1.6	1.8	2.0	2.3	2.6
Wire diameter (mm)	0.1	0.2	0.3	0.4	0.5	0.6	0.7	0.8	0.6	0.8	1.0	1.2	1.4	1.6	1.8	2.0	2.3	2.6
Coiling pin	2	2	2	2	2	2	2	2	2	2	2	2	2	2	2	2	2	2
Feed roll	2	2	2	2	2	2	2	2	4	2	2	2	2	2	2	2	2	2
Wire guide/left	1	1	1	1	1	1	1	1	1	1	1	1	1	1	1	1	1	1
Wire guide/right	1	1	1	1	1	1	1	1	1	1	1	1	1	1	1	1	1	1
Wire guide cap/left	1								1	1	1	1	1	1	1	1	1	
Wire guide cap/right	LONG 1, SHORT 1								1	1	1	1	1	1	1	1	1	
Mandrel tool blank	1								1	1	1	1	1	1	1	1	1	
Pitch tool pin	1								1	1	1	1	1	1	1	1	1	
Pitch wedge/right	( 30°, 45°, 60° ) total: 3								1	1	1	1	1	1	1	1	1	
Pitch wedge/left	( 30°, 45°, 60° ) total: 3								1	1	1	1	1	1	1	1	1	
Cut off tool/right	1								1	1	1	1	1	1	1	1	1	
Cut off tool/left	1								1	1	1	1	1	1	1	1	1	



Head Office

5050-1 Shindenbora, Asahimae-cho, Owariasahi,  
Aichi, 488-8655 Japan  
TEL 0561-53-3119 FAX 0561-54-2439  
Home page: <http://www.asahiseiki-mfg.co.jp>

Tokyo Branch

1-6-3 Yushima, Bunkyo-ku, Tokyo, 113-0034 Japan  
TEL 03-5805-6991 FAX 03-5805-6992

Osaka Sales Office

1-13-41 Esaka-cho, Suita, Osaka, 564-0063 Japan  
TEL 06-6368-6251 FAX 06-6368-6252